

PIERRE BONNARD

and

EDOUARD VUILLARD

DRAWINGS and PASTELS

WOLSELEY FINE ARTS

MMVI

We are pleased to offer a new selection of drawings and pastels by Pierre Bonnard and Edouard Vuillard.

Following the major retrospective *Edouard Vuillard – Post Impressionist Master* that was shown in Washington D.C., Montreal, Paris and London in 2003/4, and the current exhibition *Pierre Bonnard* at the Musée d'Art Moderne de la ville de Paris, interest in these two *intimiste* artists remains high.

All works are for sale on receipt of catalogue

The authenticity of all works is guaranteed.

Certificates of authenticity can be provided. All costs associated with obtaining them are the responsibility of the buyer.

Designed by Helen Swansbourne

Printed by Disc to Print, London

ISBN 1900883 53 8

Catalogue 66

PIERRE BONNARD 1867–1947

and

EDOUARD VUILLARD 1868–1940

DRAWINGS and PASTELS

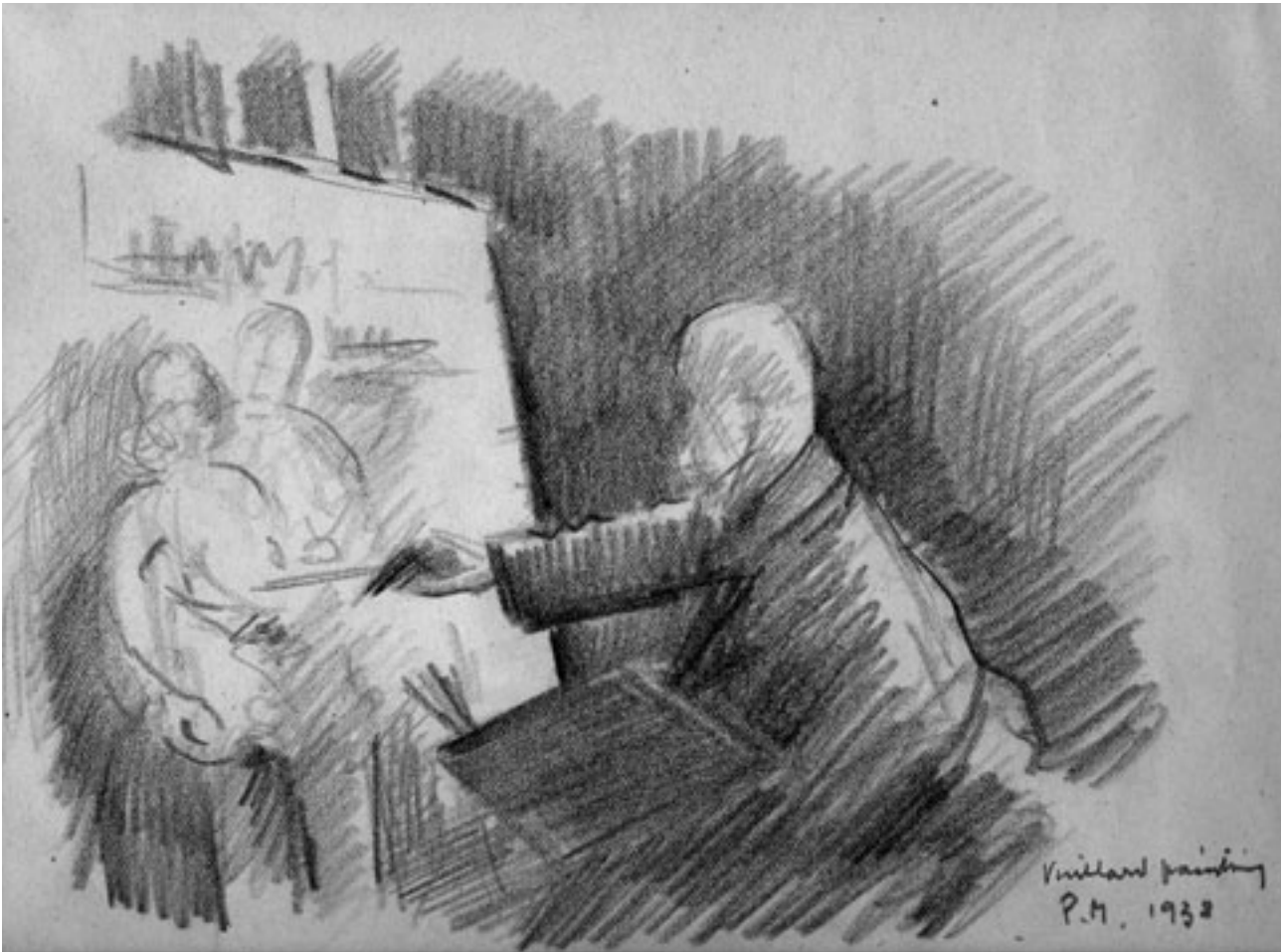


La Seine près de Vernon
c. 1920. Cat. no. 6

Exhibition dates
7 June – 15 July 2006

WOLSELEY FINE ARTS

12 Needham Road, Westbourne Grove, London W11 2RP
Tél. +44 (0)20 7792 2788 Fax. +44 (0)20 7792 2988
E-mail: info@wolseleyfinearts.com
www.wolseleyfinearts.com



Paul Maze 1887–1979, **Vuillard Painting** 1932

Black crayon on paper, 15.5 × 20.5 cm, signed with initials, dated and inscribed lower right

PIERRE BONNARD 1867–1947

- 1. Study for Boulevard** 1899
Black crayon on paper, 28.5 × 30 cm
Studio stamp lower right *Illustrated*

The drawing is a study for the colour lithograph *Boulevard* 1899 (Bouvet 65) which was published by Volland as part of the series *Quelque aspects de la vie de Paris*.
- 2. Etude pour “Cascade”** c. 1912
Pencil on paper, 12.5 × 9.1 cm
Provenance: JPL Fine Arts *Illustrated*
- 3. Groupe d’arbres** c. 1917
Pencil, 10.5 × 15.8 cm
Studio stamp lower centre and studio signature verso
- 4. Bords de rivière** c. 1917
Pencil, 10.5 × 15.8 cm
Studio stamp lower right
- 5. Recto: Maison au bord de la rivière** c. 1920
Verso: Vache dans la prairie c. 1920
Pencil, 9 × 11 cm
Certificate of authenticity from Michel Terrasse
- 6. La Seine près de Vernon** c. 1920
Pencil, 8.5 × 10.6 cm
Studio stamp lower left *Illustrated on title page*
- 7. Verso: Grand rue d’une ville** c. 1920
Recto: Maison dans une rue
Pencil, 12.8 × 18.7 cm
Studio stamp lower left
- 8. Etudes de visages** c. 1920
Black crayon on paper, 30.7 × 24.2 cm
Studio stamp lower right *Illustrated*

Antoine Terrasse thinks that the head in the lower part of the drawing is that of Bonnard’s mistress Renée Monchaty.
- 9. Nu debout** c. 1920
Pencil, 18 × 12 cm
Studio stamp lower right *Illustrated*
- 10. Trouville-Deauville** c. 1927
Pencil on paper, 10.5 × 17.3 cm
Provenance: JPL Fine Arts *Illustrated*
- 11. Sur les hauteurs près de Cannes** 1930s
Pencil on paper, 16 × 13 cm
Studio stamp lower right *Illustrated*
- 12. Palmier sur le rivage près de Cannes** 1930s
Pencil on paper, 12 × 13 cm
Studio stamp lower right *Illustrated*
- 13. Nuages sur la mer** c. 1935
Pencil with ink and watercolour traces on paper, 12.1 × 17.8 cm *Illustrated*
Exhibited: *Bonnard Drawings*, The American Federation of Arts touring exhibition 1972–74, number 72–1
Dessins de Pierre Bonnard, Musée d’art et d’histoire, Genève 1976, number 69
Drawings by Bonnard, Arts Council of Great Britain 1984–5, number 89
Pierre Bonnard Drawings, JPL Fine Arts Autumn 1987, number 90
- 14. Groupe de pins** c. 1938
Pencil on paper, 15 × 11.2 cm
Provenance: JPL Fine Arts, London *Illustrated*

EDOUARD VUILLARD 1868–1940

15. Recto: **Quatre personnages assis** c. 1889
Verso: **Deux personnages assis** c. 1889
Ink and wash, 11 × 17.5 cm
Studio stamp lower left
16. **Ernest Coquelin Cadet dans le rôle de Léidon** c. 1890
Brush and ink on paper, 30.7 × 23.2 cm
Studio stamp lower right
Note: there is a paper fold across the work *Illustrated*
17. Recto: **Visage de jeune femme** c. 1890
Verso: **Nu de dos** c. 1890
Sanguine, 27.7 × 19 cm
Studio stamp lower right
18. **La mère de l'artiste à la fenêtre** c. 1893
Pen and ink, 31 × 20.5 cm
Stamped with initials lower right *Illustrated*
19. **La fenêtre** c. 1893
Charcoal on paper, 26.8 × 23.6 cm
Stamped with initials lower right *Illustrated*
- Around this time Vuillard often depicts a figure, usually his mother, against a window. The strong lines of the window outline contrasts with the opaque quality of the light coming through it.
20. **Paysages** c. 1897
Charcoal on paper, 27 × 27 cm
Stamped with initials lower right *Illustrated*
- These studies may have been early ideas for the series of lithographs published by Vuillard as *Paysages et Intérieures* 1899, or rough outlines for some of the symbolist decorative panels depicting the landscape around L'Étang-la-Ville.
21. **La petite Annette Natanson** c. 1904
Pencil, 13.2 × 8.5 cm
Studio stamp lower right
- Annette Natanson was the niece of Misia and Thadée Natanson, the founder of the *Revue Blanche* and a lifelong friend of Vuillard's.
22. **Branchage** c. 1910
Pastel on paper, 23.5 × 31 cm
Studio stamp lower right *Illustrated*
23. **Femme assise** c. 1910
Pencil on paper, 19.8 × 10.5 cm
Studio stamp lower right *Illustrated*
24. **La Place Vintimille dans l'hiver** c. 1910
Pastel on blue paper, 25.2 × 14.8 cm
Studio stamp lower right *Illustrated in colour*
Literature: Antoine Salomon and Guy Cogeval, *Vuillard Critical Catalogue of Paintings and Pastels, Volume 11*, No IX-69 p. 1060, illustrated
25. **The Salon at "Les Pavillions"** c. 1910–11
Pencil on paper, 13 × 21.3 cm
Studio stamp lower right *Illustrated*
26. **Etude pour un sujet pour un des panneaux du foyer de la Comédie du Théâtre de Champs-Élysées** c. 1912
Pencil on paper, 16.5 × 9.8 cm
Studio stamp lower right *Illustrated*

27. **Venus de Milo** c. 1915–20
Pencil on paper, 17.1 × 9.8 cm
Inscribed M88 upper left and with studio stamp lower right *Illustrated*
Vuillard owned a plaster copy of the Venus de Milo which stood on a mantelpiece at his apartment in the Rue Calais. It appears in a number of paintings. See Antoine Salomon and Guy Cogeval, *Vuillard Critical Catalogue of Paintings and Pastels, Volume 111*, Nos X-181 and X-233.
28. **Etude pour le portait de Lucien Guitry** c. 1921
Pencil and coloured crayon on paper, 19.3 × 10.7 cm
Studio stamp lower right *Illustrated*
See Antoine Salomon and Guy Cogeval, *Vuillard Critical Catalogue of Paintings and Pastels, Volume 111*, No XI-204, illustrated p. 1408 portrait of Lucien Guitry
29. **Madame Vuillard à la fenêtre** c. 1927
Charcoal on paper, 16.7 × 11.3 cm
Studio stamp lower right *Illustrated*
30. **Sous-bois aux Clayes** c. 1932–8
Pastel on coloured paper, 23.4 × 30.5 cm
Studio stamp lower right *Illustrated in colour*
31. **Juliette Weil** 1927/8
Pencil on paper, 10 × 14.5 cm
Studio stamp lower right *Illustrated*
Juliette Weil was the wife of Dr. Prosper-Emile Weil, the brother of Romain Coolus. Vuillard made a series of paintings of the Weil children in 1922/3 and portrait studies of both Prosper-Emile and Juliette from 1926–8. This drawing relates to a number of works from this period. See Antoine Salomon and Guy Cogeval, *Vuillard Critical Catalogue of Paintings and Pastels, Volume 111*, pp. 1348–1354
32. **Pot de fleurs** c. 1930
Pastel and charcoal on paper, 24.8 × 32.5 cm
Studio stamp lower right
Literature: Antoine Salomon and Guy Cogeval, *Vuillard Critical Catalogue of Paintings and Pastels, Volume 111*, No XI-152, illustrated p. 1373 *Illustrated*
33. **Château des Clayes, le parc à travers la fenêtre** 1932–37
Pastel on paper, 35.6 × 27.6 cm
Studio stamp lower left *Illustrated in colour*
Literature: Antoine Salomon and Guy Cogeval, *Vuillard Critical Catalogue of Paintings and Pastels, Volume 111*, No XII-295, illustrated p. 1595
34. **Communs de Château des Clayes** c. 1933–38
Pencil, 11.1 × 18 cm
Studio stamp lower right
35. **Rue de village** 1935
Pastel on paper, 37 × 46.5 cm
Studio stamp lower right
Provenance: Jean-Claude Bellier Inc.
Private collection New York, acquired from above in 1986 *Illustrated in colour*



Study for Boulevard 1899. Cat no. 1



Etude pour "Cascade" c. 1912. Cat. no. 2



Etudes de visages c. 1920. Cat. no. 8



Nu debout c. 1920. Cat. no. 9



Trouville-Deauville c. 1927 Cat. no. 10



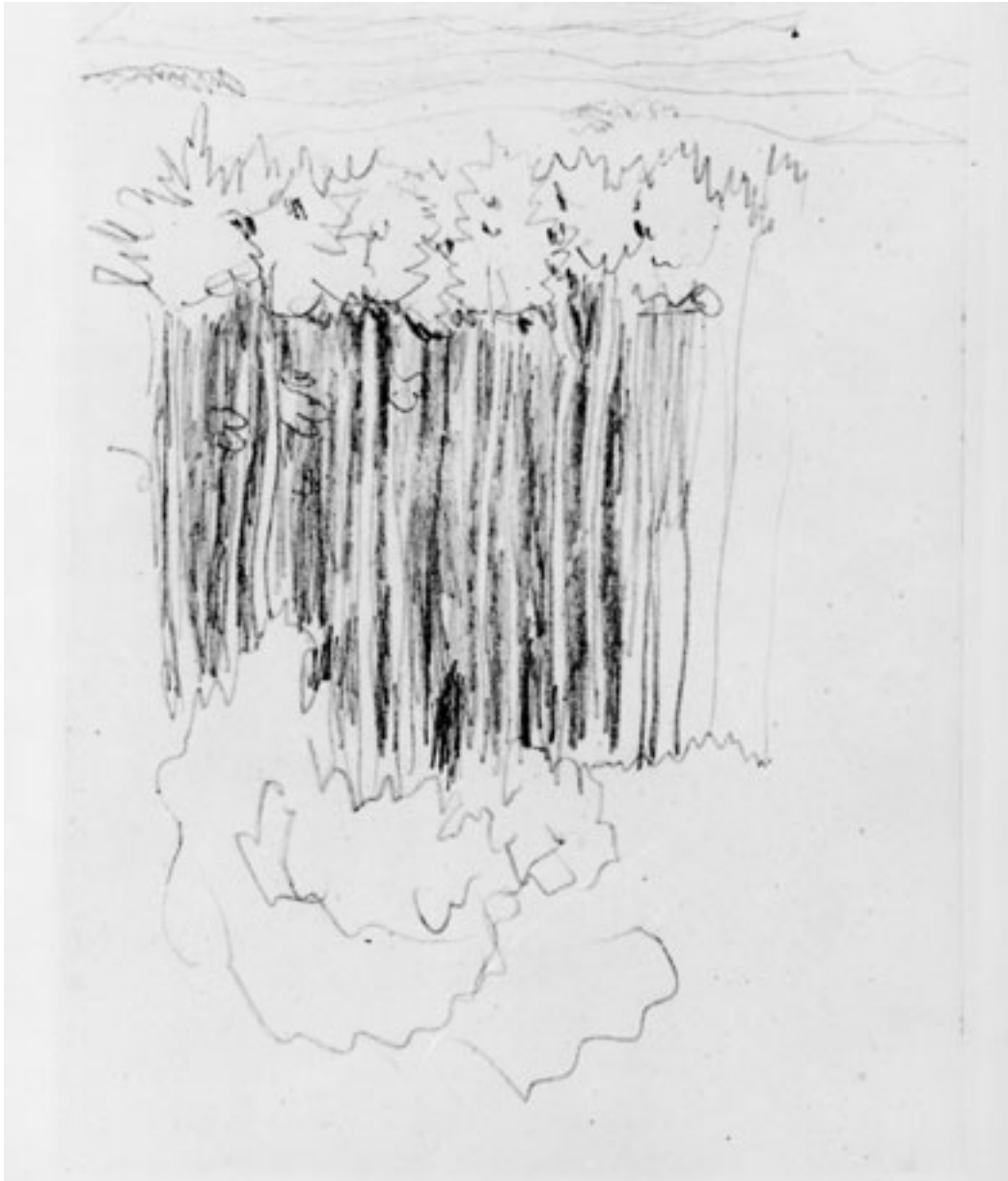
Sur les hauteurs près de Cannes 1930s. Cat. no. 11



Palmier sur le rivage près de Cannes 1930s. Cat. no. 12



Nuages sur la mer c. 1935. Cat. no. 13



Groupe de pins c. 1938. Cat. no. 14



La Place Vintimille dans
l'hiver c. 1910. Cat no. 24



Sous-bois aux Clayes c. 1932–8. Cat. no. 30



Château des Clays, le parc à travers la fenêtre 1932–37. Cat. no. 33



Rue de village 1935. Cat. no. 35



Quatre personnages assis c. 1889. Cat. no. 15



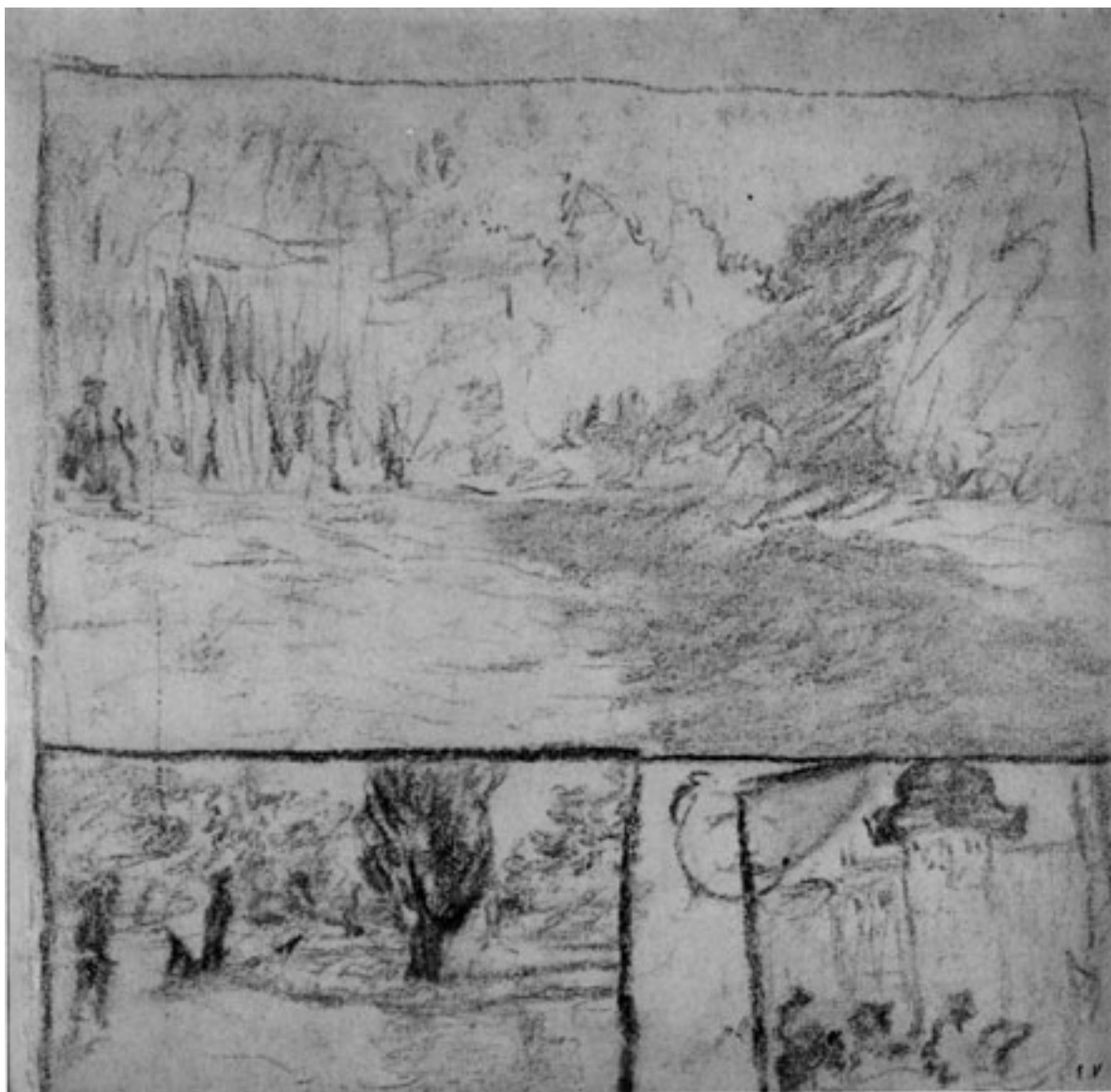
Ernest Coquelin Cadet dans le rôle de Léidon c. 1890. Cat. no. 16



La mère de l'artiste à
la fenêtre c. 1893.
Cat. no. 18



La fenêtre c. 1893. Cat. no. 19



Paysages c. 1897. Cat. no. 20



Branchage c. 1910. Cat. no. 22



Femme assise c. 1910.
Cat. no. 23



The Salon at "Les Pavillons" c. 1910–11. Cat. no. 25



Etude pour un sujet pour
un des panneaux du foyer
de la Comédie du Théâtre
de Champs-Élysées
c. 1912. Cat. no. 26



Venus de Milo c. 1915–20.
Cat. no. 27



Etude pour le portrait
de Lucien Guitry c. 1921.
Cat. no. 28



Madame Vuillard à la
fenêtre c. 1927.
Cat. no. 29



Juliette Weil 1927/8. Cat. no. 31



Pot de fleurs c. 1930. Cat. no. 32

PIERRE BONNARD and EDOUARD VUILLARD

DRAWINGS and PASTELS

7 June – 15 July 2006

PRICE LIST

Paul Maze 1887–1979

Frontispiece. Vuillard painting 1932, crayon, 15.5 × 20.5 cm £2,250

Pierre Bonnard 1867–1947

1. Study for Boulevard 1899, black crayon, 28.5 × 30 cm £7,500
2. Etude pour Cascade c. 1912, pencil, 12.5 × 9.1 cm £2,600
3. Groupe d'arbres c. 1917, pencil, 10.5 × 15.8 cm £3,500
4. Bords de rivière c. 1917, pencil, 10.5 × 15.8 cm £2,900
5. Maison au bord de la rivière c. 1920, pencil, 9 × 11 cm £2,600
6. La Seine près de Vernon c. 1920, pencil, 8.5 × 10.6 cm £4,500
7. Grand rue d'une ville c. 1920, pencil, 12.8 × 18.7 cm £5,000
8. Etude de visages 1920, black crayon, 30.7 × 24.2 cm £5,500
9. Nu debout c. 1920, pencil, 18 × 12 cm £6,000
10. Trouville-Deauville c. 1927, pencil, 10.5 × 17.3 cm £7,500
11. Sur les hauteurs près de Cannes 1930s, pencil, 16 × 13 cm £5,250
12. Palmier sur le rivage près de Cannes 1930s, pencil, 12 × 13 cm £3,000
13. Nuages sur la mer c. 1935, pencil, ink and watercolour, 12.1 × 17.8 cm £6,500
14. Groupe des pins c. 1938, pencil, 15 × 11.2 cm £2,400

Edouard Vuillard 1868–1940

15. Quatre personnages assis c. 1889, ink, 11 × 17.5 cm £4,500
16. Ernest Coquelin Cadet dans le rôle de Léidon c. 1890, ink, 30.7 × 23.2 cm £4,750
17. Visage de jeune femme c. 1890, sanguine, 27.7 × 19 cm £5,500

18. La mère de l'artiste à la fenêtre c. 1893, ink, 31 × 20.5 cm £3,400
19. La fenêtre c. 1893, charcoal, 26.8 × 23.6 cm £4,500
20. Paysages c. 1897, charcoal, 27 × 27 cm £4,250
21. La petite Annette Natanson c. 1904, pencil, 13.2 × 8.5 cm £3,000
22. Branchage c. 1910, pastel, 23.5 × 31 cm £4,500
23. Femme assise c. 1910, pencil, 19.8 × 10.5 cm £4,250
24. La Place Vintimille dans l'hiver c. 1910, pastel, 25.2 × 14.8 cm £40,000
25. The salon at "les Pavillions" c. 1910–11, pencil, 13 × 21.3 cm £6,000
26. Etude pour la Comédie du Théâtre c. 1912, pencil, 16.5 × 9.8 cm £1,350
27. Venus de Milo c. 1915–20, pencil, 17.1 × 9.8 cm £4,500
28. Etude pour Lucien Guitry c. 1921, pencil & crayon, 19.53 × 10.7 cm £1,600
29. Madame Vuillard à la fenêtre c. 1927, charcoal, 16.7 × 11.3 cm £5,000
30. Sous-bois aux Clayes c. 1932–8, pastel, 23.4 × 30.5 cm £12,000
31. Juliette Weil 1927/8, pencil, 10 × 14.5 cm £2,900
32. Pot de fleurs c. 1930, pastel, 24.8 × 32.5 cm £15,000
33. Château des Clayes, parc à travers la fenêtre 1932–7, pastel, 35.6 × 27.6 cm £16,000
34. Communs de Château des Clayes c. 1933–8, pencil, 11.1 × 18 cm £3,400
35. Rue de Village 1935, pastel, 37 × 46.5 cm £20,000

WOLSELEY FINE ARTS

12 Needham Road, London W11 2RP

E & OE

Tel: +44 (0)20 7792 2788, Fax: +44 (0)20 7792 2988, Email: info@wolseleyfinearts.com